



PORTA-BAGGER™

PORTABLE BULK BAG FILLER

"THE MOST VERSATILE BAGGER ON THE MARKET"

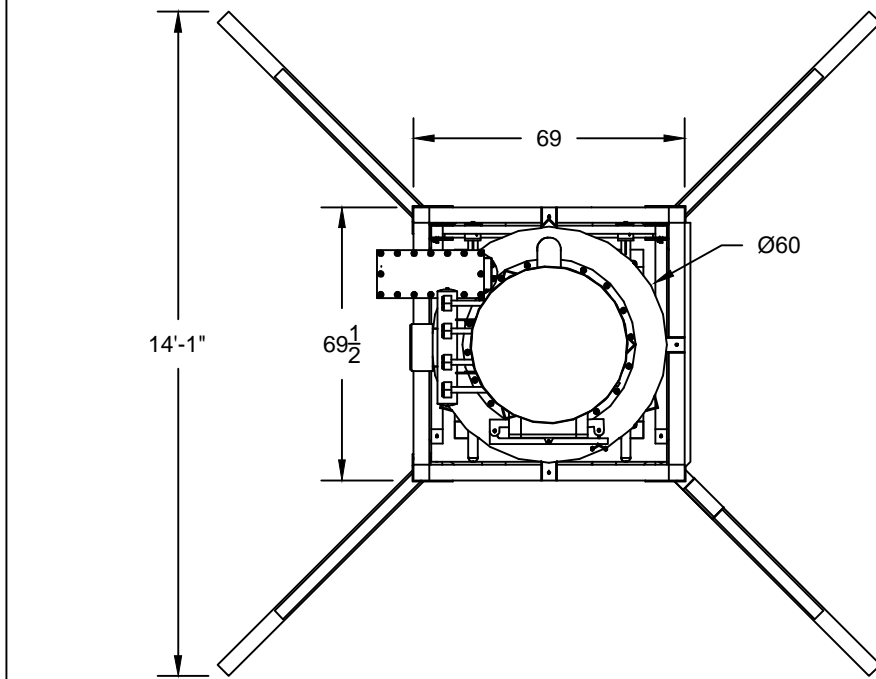
FEATURES AND OPTIONS:

- Accommodates up to 67" FIBC Bulk Bag wall height
- Width-adjustable bag loop guides with rounded ends
- Food-grade flexible product sleeve for vertical adjustment
- Forklift tine-slots for portability
- Stainless steel product spout with inflatable cuff
- Easy-reach hand-actuated air valve for inflatable cuff
- Floor scale load cells
- Integrated weight indicator
- Slide-gate valve with dribble function
- Flared legs for stability
- 60 degree slope for easy product flow
- Vibrator mounts for product flow
- Surge bin filter receiver with pulse-jet technology
- Easy access door with toolless entry
- Bag inflation fan for quick filling
- Stainless steel food-grade product contact areas
- Bag filling dust filter for dusty or hazardous materials
- Motorized height adjust
- Densification

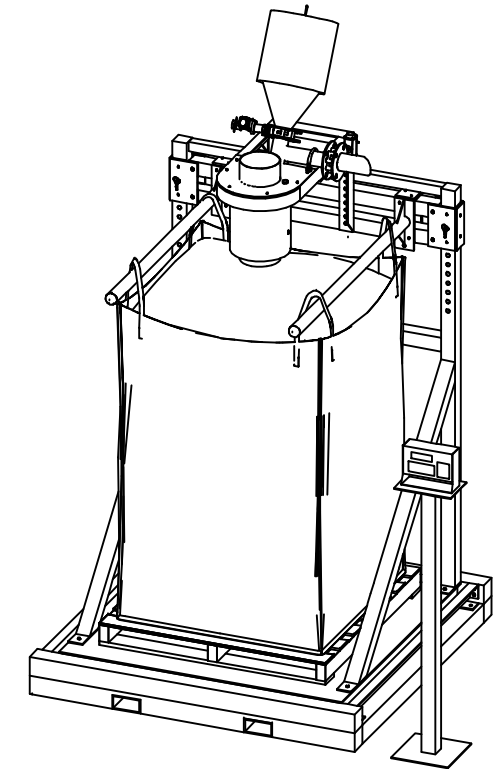
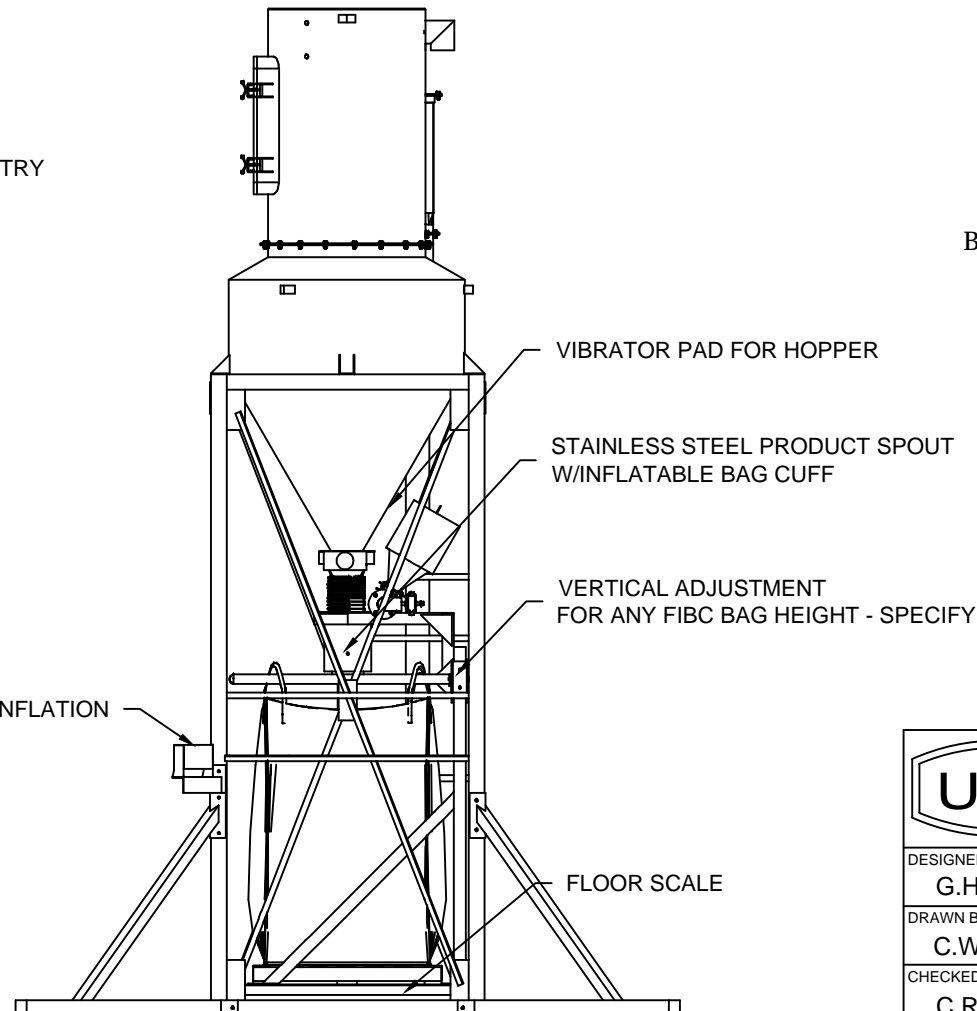
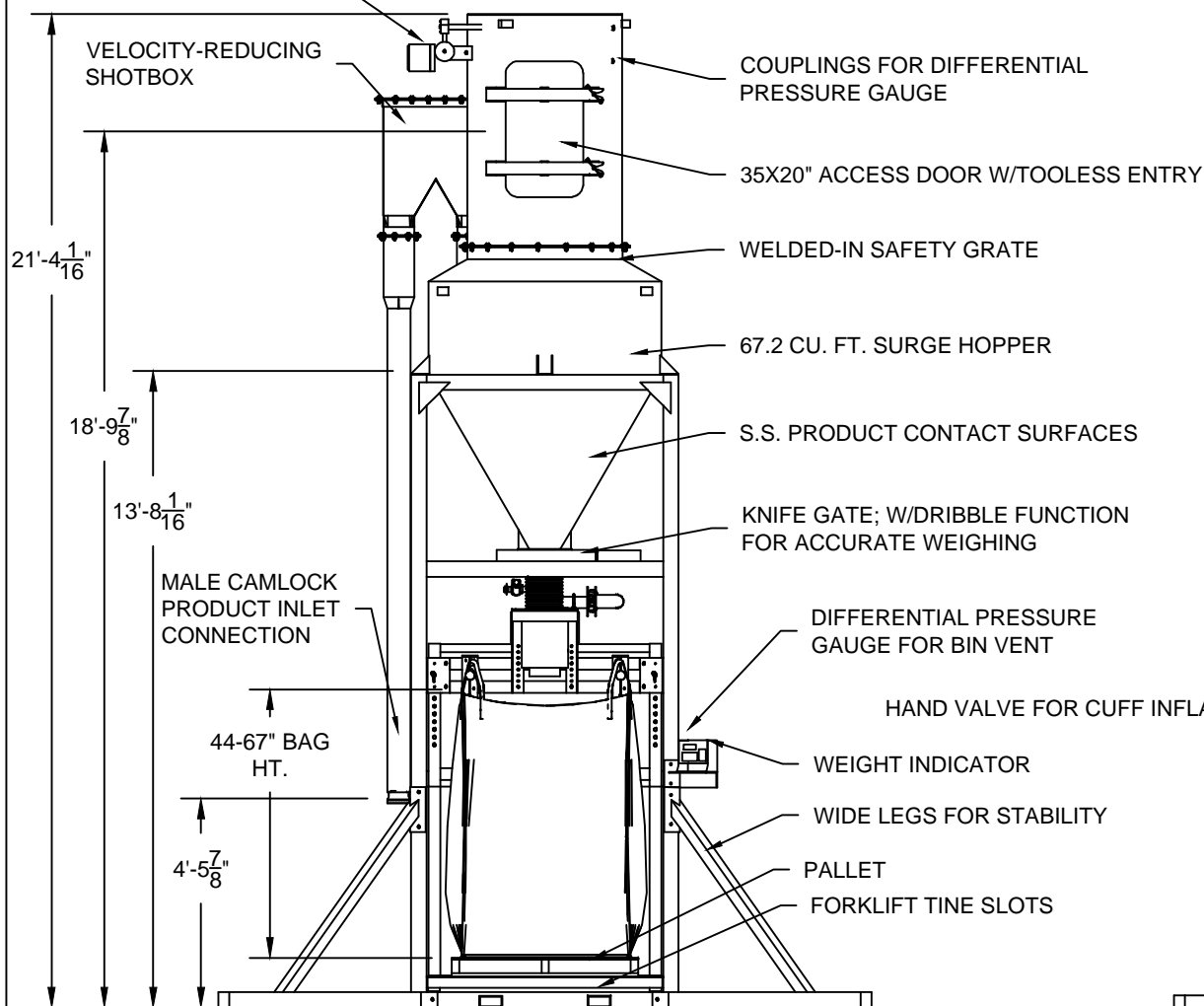
BENEFITS:

- Use a wide-variety of bulk bags
- Can be paired with a USS SKIDPOT™ portable pneumatic conveying system
- Durable design for decades of use
- Dribble function for accurate weighing
- Product flows easily
- Safe for operators to use
- Long-lasting industrial-duty components
- Can be used at one location or different sites
- Capital investment moves where you need it most
- Densification option optimizes bag utilization
- Motorized height adjust makes changing bag size a breeze
- Easy removal of filtration media
- Easy to ship
- Easy to use
- Easy to move
- Easy to clean
- Easy to maintain

NOTE: USS PORTA-BAGGERS™ ARE CUSTOM-BUILT TO YOUR OPTIONS AND SPECIFICATIONS



USS PULSE-JET HEADER
AND CONTROL PANEL



BASE MODEL WITH SCALE, DUST FILTER, AND BAG INFLATE OPTIONS

SALES INQUIRIES:
913-281-1010
info@unitedstatessystems.com

		UNITED STATES SYSTEMS, inc.	
P.O. Box 5218 1028 Scott Ave. Kansas City, Kansas 66119 (913) 281-1010			
DESIGNED BY G.H.	MATERIAL	TITLE	
DRAWN BY C.W.	DATE	USS PORTA-BAGGER™	
CHECKED BY C.R.	DATE		
SCALE			